

Certificate in International Business English Training

Jointly validated and managed by English UK and Trinity College London



About the course

The Cert IBET (Certificate in International Business English Training) is an international qualification, jointly validated and managed by English UK and Trinity College London. It develops teachers' ability to design and deliver quality Business English training courses.

With **only four to eight participants, each of our blended learning Cert IBET courses** runs over five days (30 hours) in Bath with a further 20+ hours via a two-month distance learning programme.

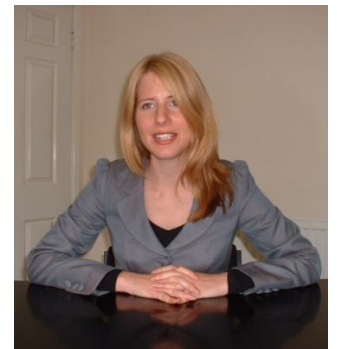
Course Outline

1. Definitions of Business English
2. Concepts and language in a business context
3. Needs analysis and research
4. Materials and resources
5. Internationalism and culture
6. Course and syllabus design
7. Methods and approaches
8. Business communication skills
9. Assessment and evaluation
10. Professional development and employment

Course Leaders



Sara Helm



Rebecca Utteridge

Business English trainers and authors, **Sara Helm** and **Rebecca Utteridge**, will draw on their extensive experience to guide you through your exploration of best practice in Business English training.

"Marks a milestone in my professional development"
Katrin Lichterfeld – Germany

"All killer-no filler!" Kirstin McLenaghan – UK

"An extremely enriching experience for me" Anne-Marie Retout – France

To gain the Cert IBET qualification, you will additionally need to complete a 3000 - 4000 word post-course assignment.

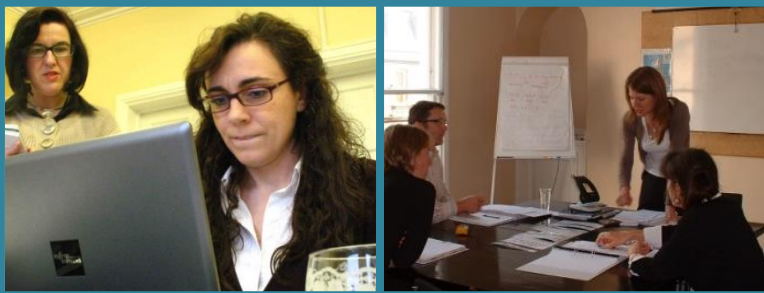
The minimum entry requirement is a Trinity Cert TESOL or Cambridge CELTA (or equivalent overseas teaching qualification) and usually two years' full-time English language teaching experience. Non-native speaker applicants should have a minimum level of English equivalent to Trinity ISE III, IELTS 7.0, TOEFL 627 or CEFR C1.

Experience of Business English training and access to Business English learners is also desirable.

About LTS

As a leading UK provider of **Business English** and **intercultural communication** training, LTS has worked with global organisations for over 30 years.

We were also one of the first companies in Europe to deliver courses leading to a qualification in **Business English trainer training**, and since 2005 have also offered a highly rated train-the-trainer course for intercultural trainers, called **Developing intercultural training skills**.



Course delivery

In addition to our fixed date courses in Bath, a range of alternative delivery options is available:

- on demand closed group courses can be delivered in Bath or at a location of your choice
- one-to-one courses can be offered to suit your personal schedule

Courses can be delivered in face-to-face, blended or distance format. Please contact us for further details.

Autumn and Winter 2012 Course Dates and Fees

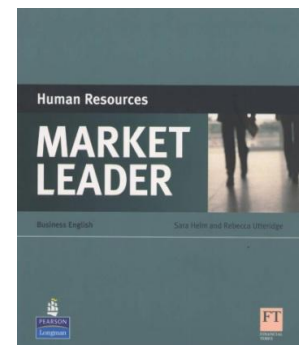
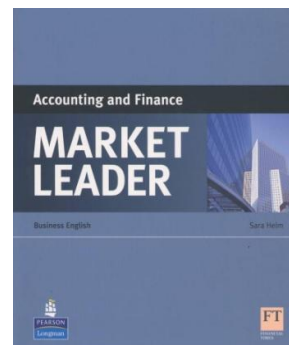
3-7 September 2012	GBP 700
10-14 December 2012	GBP 850
Cert IBET assignment fee	GBP 180

Our Publications

The LTS team have authored numerous well known Business English publications. These include the *Business English Skills* series (Pearson Longman), the award winning *Teaching Business English* (OUP), several titles in the *Best Practice* series (Heinle ELT), including teachers' resource books, as well as contributions to the *In Company* series (Macmillan).

Online publications include materials for www.market-leader.net and the number one site for English language teachers - www.onestopenglish.com

Sara Helm and Rebecca Uttridge contributed *Accounting and Finance* and *Human Resources* to the latest range of ESP titles in the Pearson Longman *Market Leader* series.



Location and accommodation

Located very close to the heart of the UNESCO World Heritage City of Bath, the LTS training centre provides a convenient and convivial learning environment. As a popular tourist destination, Bath offers a wide choice of places to stay. See our website for hotel and B&B recommendations or book one of our friendly host families.

Contact Details

Sara.Helm@lts-training.com

LTS training and consulting
5 Belvedere, Lansdown Road
Bath BA1 5ED, UK
Tel: +44 (0)1225 448148
Website: www.lts-training.com