

Certificate in International Business English Training

Jointly validated and managed by English UK and Trinity College London



About the course

The **Cert IBET (Certificate in International Business English Training)** is an international qualification, jointly validated and managed by English UK and Trinity College London. It develops teachers' ability to design and deliver quality Business English training.

With a maximum of eight participants, our blended learning Cert IBET course runs over five days (30 hours) in Bath and a further 20 hours via distance learning.

We also offer a 'five-day only' option (TEIB) to gain the LTS Teaching English for International Business certificate.

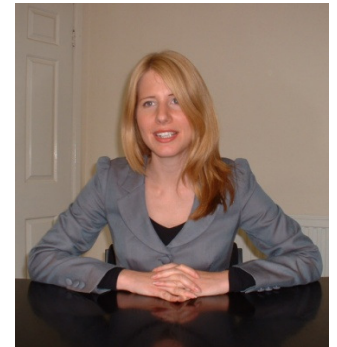
Course Outline

1. Definitions of business English
2. Concepts and language in a business context
3. Needs analysis and research
4. Materials and resources
5. Internationalism and culture
6. Course and syllabus design
7. Methods and approaches
8. Business communication skills
9. Assessment and evaluation
10. Professional development and employment

Course Leaders



Sara Helm



Rebecca Utteridge

Business English trainers and authors, **Sara Helm** and **Rebecca Utteridge**, will draw on their extensive experience to guide you through your exploration of best practice in business English training.

"Marks a milestone in my professional development"
Katrin Lichterfeld – Germany

"All killer-no filler!" Kirstin McLenaghan – UK

"An extremely enriching experience for me"
Anne-Marie Retout – France

To gain the Cert IBET qualification you will additionally need to complete a 3000-5000 word post-course assignment.

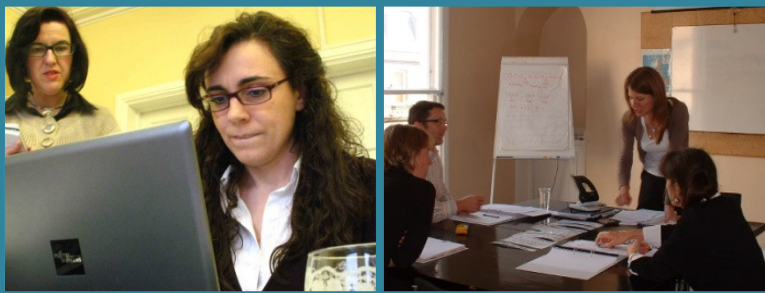
The minimum entry requirement is a Trinity Cert TESOL, Cambridge CELTA (or equivalent overseas teaching qualification) and one year's teaching experience. Teachers with 3 years' relevant teaching experience but without a formal teaching qualification are welcome to apply to LTS.

Experience of business English training and access to business English learners is also desirable. Applicants should have a minimum level of English equivalent to Trinity ISE III, IELTS 7.0, TOEFL 627 or CEFR C1.

About LTS

As a leading UK provider of **Business English** and **intercultural communication** training, LTS has worked with global organisations for over 30 years.

We were also one of the first companies in Europe to deliver courses leading to a qualification in **Business English trainer training**, and since 2005 have also offered a highly rated train-the-trainer course for intercultural trainers, called **Developing intercultural training skills**.



Fixed Bath Course Dates

Courses run in Bath on the following dates:

- 12-16 December 2011**
- 20-24 February 2012**
- 21-25 May 2012**
- 3-7 September 2012**

Course Fees (no VAT charged)

Cert IBET course	Euro 840 / GBP 700
Cert IBET assignment fee	Euro 190 / GBP 160
TEIB course (five-day)	Euro 625/ GBP 520

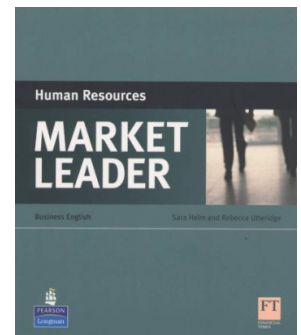
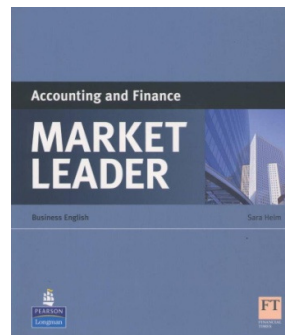
Extra Course Dates

On demand face-to-face or blended learning courses for specific groups can be delivered at LTS in Bath or at a **different location**.

Our Publications

The LTS team have authored numerous well known Business English publications. These include the *Business English Skills* series (Pearson Longman), the award winning *Teaching Business English* (OUP), several titles in the *Best Practice* series (Heinle ELT), six ESP titles in the latest *Market Leader* series (Pearson Longman), as well as contributions to the *In Company* series (Macmillan).

LTS online publications include materials for www.market-leader.net and www.onestopenglish.com



Location and accommodation

Located very close to the heart of the UNESCO World Heritage City of Bath, the LTS training centre provides a convenient and convivial learning environment. As a popular tourist destination, Bath offers a wide choice of places to stay. We can help you organise a hotel, B&B or host family - on a self catering, B&B or half-board basis - close to the LTS training centre and a very short walk from the city centre.

EU Funding for Teachers

Teachers and trainers in adult education institutions in most European countries outside the UK can apply for Grundtvig in-service training grants to attend the course in the UK, under the EU Lifelong Learning Programme. Please contact us for help with your application, which needs to be made several months before your course begins.

Contact Details

Sara.Helm@lts-training.com

LTS training and consulting
5 Belvedere, Lansdown Road
Bath BA1 5ED, UK

Tel: +44 (0)1225 448148

Website: www.lts-training.com